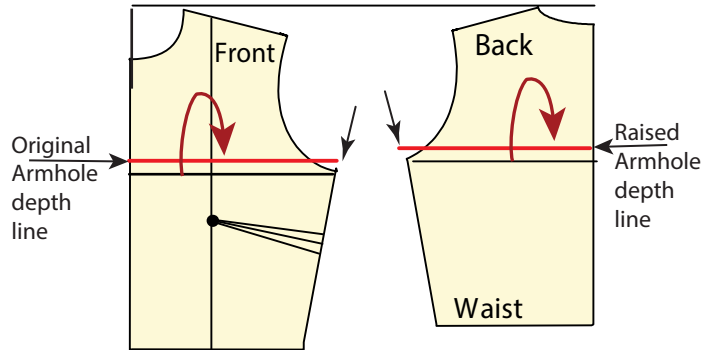


How to Raise the Depth of the Armhole for a Dress (or Top) With out Sleeves.

①

1. Raise the armhole depth like this.

Draw a line across the bodice (1.5 cm) above the armhole depth line.



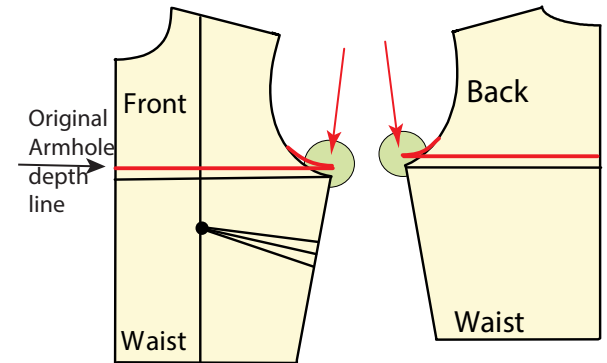
HOW TO RAISE THE DEPTH OF THE ARMHOLE FOR PATTERNS WITHOUT SLEEVES

1. The depth of the armhole must be raised.
2. The length of the armhole curve must be shortened.
3. The side seam must be lengthened to reach the higher arm hole depth line.

②

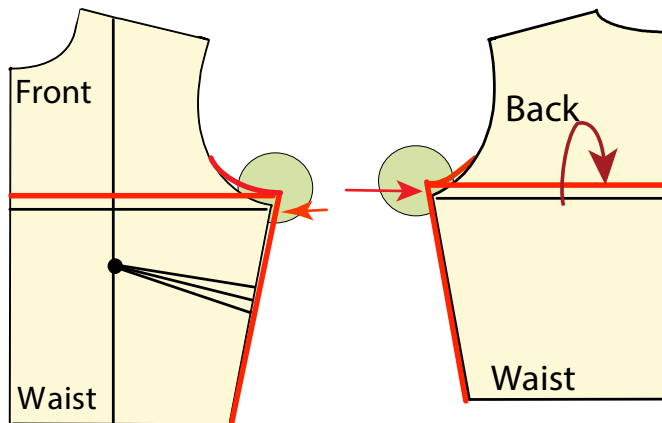
How to shorten the length of Armhole Curve.

Draw in the lower curve of the armhole curve to the raised armhole depth line.

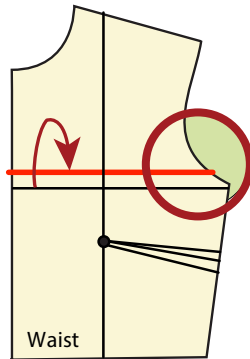


③

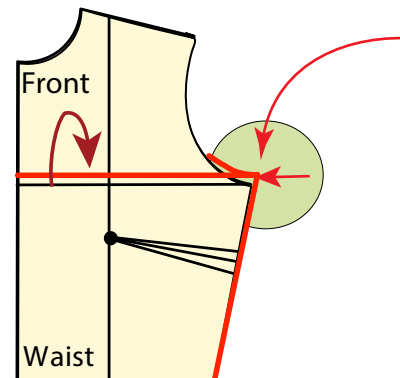
3. Lengthen the side seam to reach the raised armhole depth.



Don't do this



Do this



④

Re measure the width (size) of the pattern to ensure it is still the same size, as it was *before* this adjustment was made.

