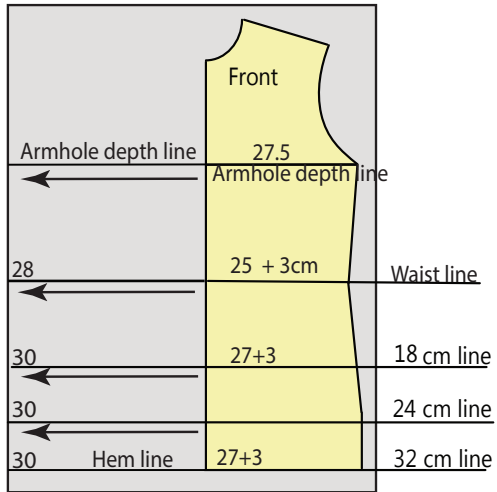


Mock Cowl Blouse - Made with Stretch Fabric.

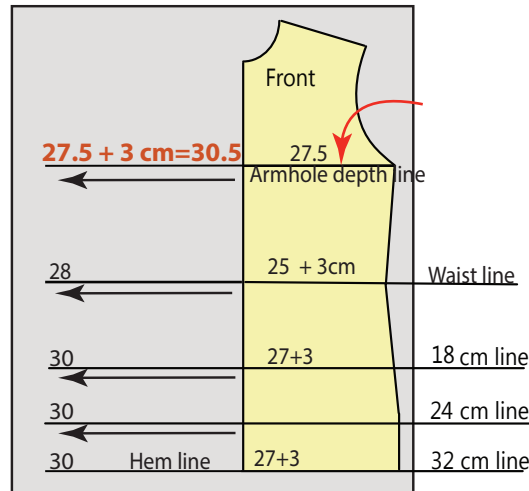
⑤

On the front pattern **only**, extend the armhole depth line, the waist line, and the hem lines, across the paper.
The width of each extended, horizontal line must be the same width as the line of origin.



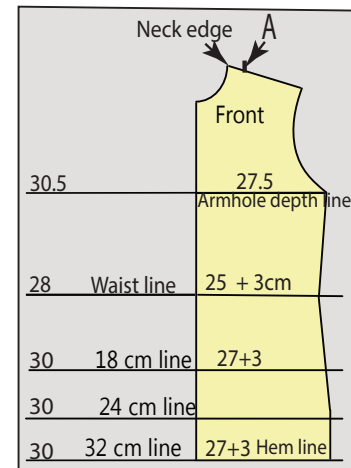
⑥

Add 3 cm extra, to the armhole depth line, **only** when extending this line across the paper.



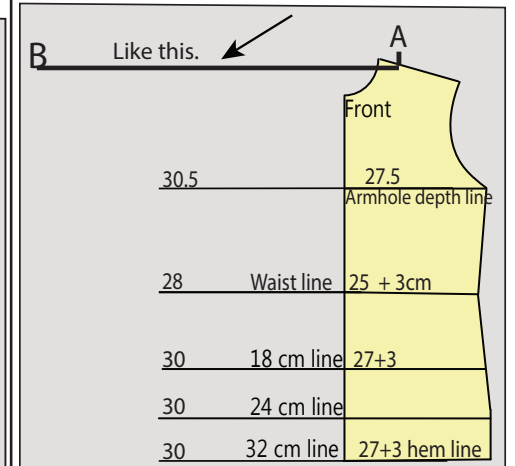
⑦

Mark a point, 4 cm away from front neck edge, on the shoulder line.
For ease of reference, mark this point as A



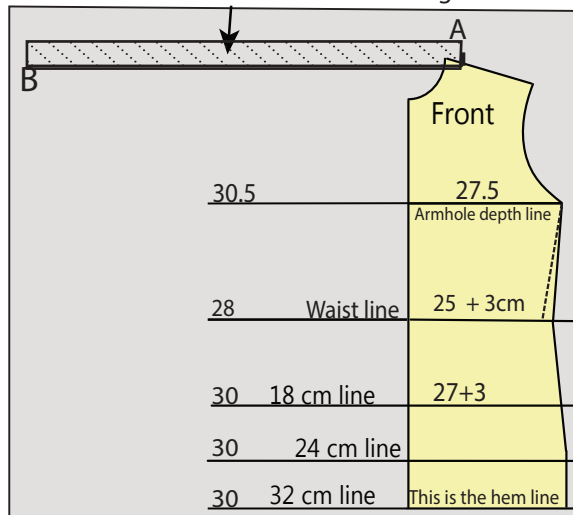
⑧

Draw a line 43 cm across, from point A.
Mark the end of the 43 cm line as B.



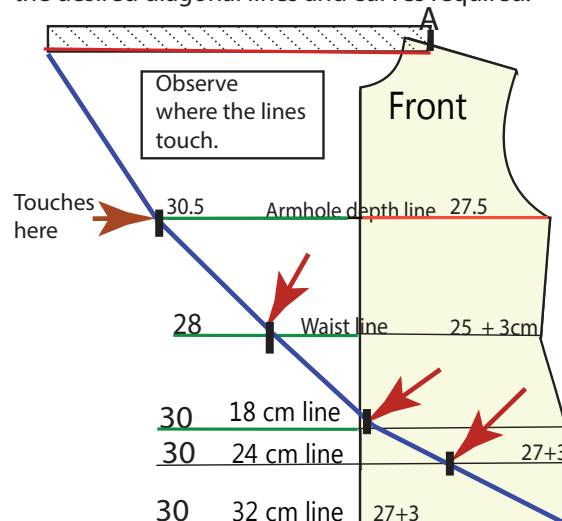
⑨

Add 5 cm above the 43 cm line, to form a rectangle which will be used for a fold over facing when sewing.



⑩

Draw lines joining these points. This is approximately the desired diagonal lines and curves required.



Slightly curve the lines, observing carefully where the lines touch and blend with the extended lines, and how slight the curves are.

